



310.04

Operating instruction Fine boring heads EWE 41-200 Digital

Important:

The digital display ⑦ always shows the dimensional change to the previously set value or to „0“. The absolute value can not be shown. Make dimensional corrections only with digital display switched on and with the tool holder ① assembled to the boring head.

Fig. 1

Preparation and presetting of the boring tool

Put the appropriate insert holder ① to the boring head and tighten with clamp screws ③. Unlock the tool carrier by loosening the clamp screw ④. Adjust the desired diameter on a presetter by the adjustment disc ⑤. Lock the tool carrier with clamp screw ④.

Fig. 2

Carry out dimensional corrections

Switch on digital display by pressing button ⑥. The display ⑦ shows the previously stored value. Press button ⑥ 1s to reset the value to "0". Loosen clamp screw ④ to unlock tool carrier. Correct the dimension [difference between

actual and nominal diameter] by turning the adjustment disc ⑤. Lock tool carrier with clamp screw ④.

Fig. 3

When the battery level is too low, the tool display ⑦ will show the „Accu“ message for a few seconds. This message indicates that the CR1025 ⑩ battery must be replaced. The tool can still be operational for a few hundred times more, but we recommend replacing the battery as soon as the "Accu" sign is shown for the first time.

Procedure for battery replacement:

Make the tool perfectly dry before replacing the battery. If possible, apply some air pressure around the edges of the battery lid ⑨ in order to remove any water trapped between the lid and the main body. Remove the three screws ⑧ and the battery lid, taking care to not let any water drops fall inside the battery compartment or in the lower side of the battery cover. Use a clean cloth with alcohol to remove any oil or water from the lower side of the battery lid ⑥. For

battery exchange please remove the old battery and wait two minutes before placing the new one. This will ensure a complete internal reset. Make sure the O-ring is correctly placed before closing the battery lid. Place the battery lid and tighten the three screws.

General Information

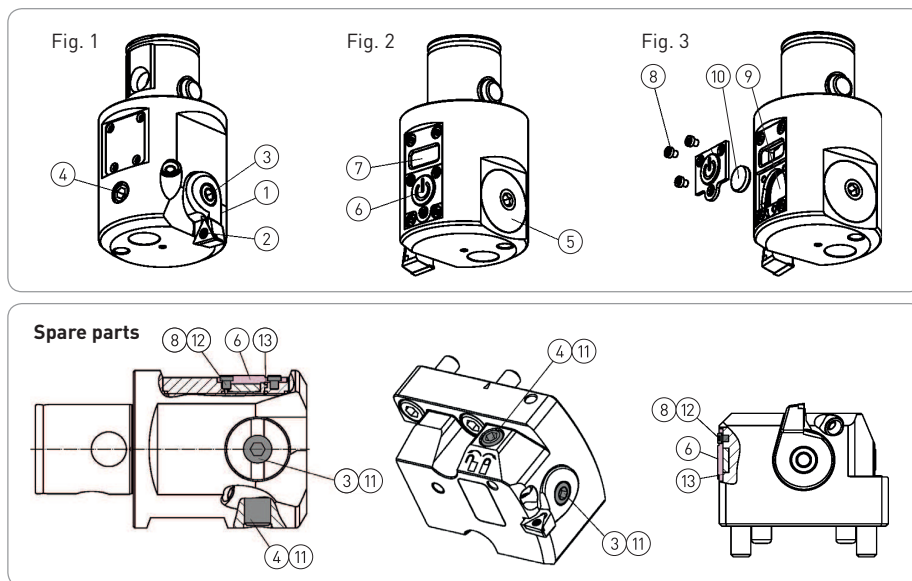
- Max. coolant pressure: 40 bar (580 psi)
- Max. operating temperature: 40° C (104° F)
- Note that the tool carrier travel is limited. Do NOT use force when adjusting.
- Periodic lubrication (every 20 operating hours approx.) via the lube nipple ensures high precision combined with long life. Light machine oil is recommended, e.g. Mobil Vactra Oil No. 2, BP Energol HLP-D32, Klueber Isoflex PDP 94.
- Protection category DIN 40050: IP 69K
- Fine boring head can be connected with a smartphone or a tablet. Download the app "BIG KAISER" for iOS or Andorid devices in the app stores.
- Check the disclaimer in the app.

Statements

This device complies with part 15 of the FCC Rules and In-dustry Canada license-exempt RSS standard(s). Operation is subject to the following two conditions:

1. This device may not cause harmful interference, and
2. this device must accept any interference received, in-cluding interference that may cause undesired operation.

Changes or modifications not expressly approved by the party responsible for compliance could void the user's au-thority to operate the equipment.



	③		⑪	④		⑧	⑩		⑫	⑬			
	M [Nm]	M [ft.-lbs.]		M [Nm]	M [ft.-lbs.]		M [Nm]	M [ft.-lbs.]					
EWE 41	690.138	3	2.2	690.813	690.997	2.5	1.8	690.326	1	0.75	694.808	395.170	395.161
EWE 53	690.139	6	4.5	690.814	690.996	6	4.5						
EWE 68	690.141	12	9	690.816	690.469	10	7.5						
EWE 100	690.141	12	9	690.816	690.553	10	7.5						
EWE 200	690.140	12	9	690.816	690.469	10	7.5						