

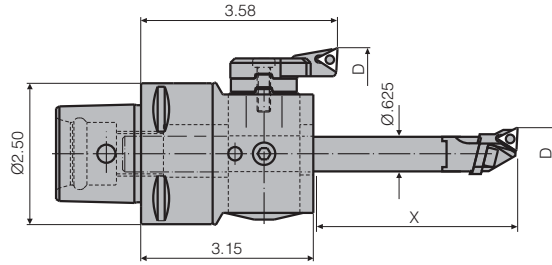
KAISER-CAPTO BORING SYSTEMS

KAISER EWN 2-50XL FINISH BORING HEAD, CAPTO C6

Compact, statically balanced design permits high cutting speeds, minimal projection and optimal performance.

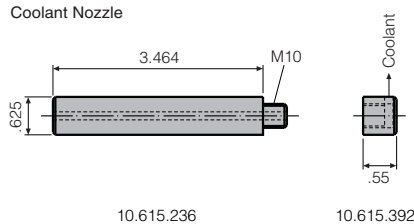


CATALOG NUMBER
10.470.118 INCH
10.470.108 METRIC



Inch Graduated, 1 Div. = .0005"/Ø. Metric heads available upon request.

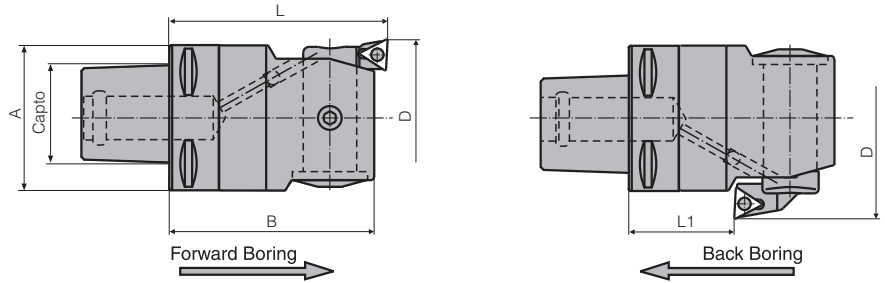
CAPTO	BORING RANGE	REDUCTION BUSHING	TOOL HOLDER	BORE DEPTH MAX X	EXEC. *	INSERT HOLDER	INSERT GEOMETRY	INSERT SCREW	BORING RANGE D CAPACITY				
									Min	Max			
C6	.078 - 2.125	10.613.524	10.611.155	.354	-	CARBIDE CUTTERS C2			.078	.138			
			10.611.156	.551	-				.118	.236			
		10.613.525	10.615.201	2.362	C	-	WC..02	10.694.101	.228	.295			
			10.613.526	10.615.202	2.559				C	.287	.374		
		10.613.527	10.615.205	3.346	C	-	-	-	.315	.461			
			10.615.207	1.968	C								
		10.613.528	10.615.211	1.377	S	10.613.524	-	-	.346	.492			
			10.615.212	2.362	C								
		10.613.529	10.615.222	2.952	C	-	-	-	.394	.500			
			10.615.206	4.133	C								
		10.613.530	10.615.214	1.771	S	10.615.272	TP..07	10.694.103	.464	.571			
			10.615.215	2.755	C								
			10.615.223	3.543	C								
		10.613.511	10.615.250	4.724	C	-	-	-	.543	.650			
			10.615.218	2.775	S								
			10.615.219	3.937	C								
		10.613.512	10.615.224	5.118	C	10.615.273	-	-	.583	.661			
			10.615.251	5.512	C								
			10.615.232	2.952	S				10.615.280				
		10.613.514	10.615.233	4.133	C	10.615.281	-	-	.622	.728			
			10.615.221	5.314	C								
			10.615.282								.700	.807	
		-	-	-	10.615.236	3.149	S	-	TC..11	10.694.122	.780	.886	
											10.615.283	.858	.965
											10.615.290	.937	1.004
											10.615.288	.976	1.083
											10.615.291	1.016	1.122
											10.615.284	1.094	1.280
10.615.285	1.252										1.437		
10.615.286	1.409										1.594		
10.615.287	1.567										1.772		
10.615.292	1.764										2.125		
3.15 - 6.00	-	Coolant Nozzle	10.615.236	6.299	C	-	TC..11	10.694.122	3.15	3.62			
									10.626.908	3.62	4.09		
									10.626.907	4.09	4.57		
									10.626.909	4.57	5.04		
									10.626.909	5.04	5.51		
									10.626.907	5.51	6.00		
									10.626.910				
									10.626.910				
									10.626.907				
									10.626.907				



*Execution S = Steel Bar C = Carbide Bar

KAISER – CAPTO EWN FINISH BORING HEADS

Multifunctional and balance optimised for highest precision and efficiency.

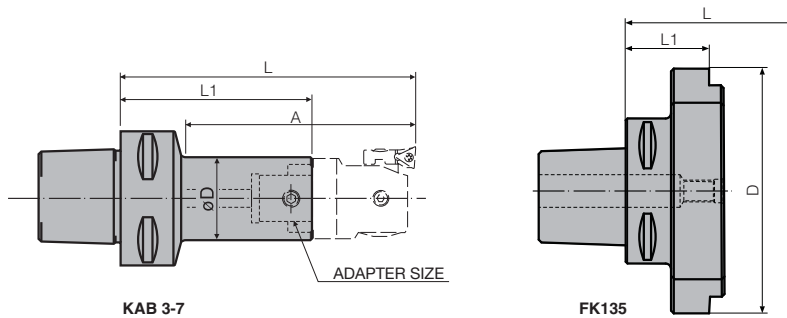


Inch Graduated, 1 Div. = .0005"/Ø. Metric heads available upon request.

CAPTO	CATALOG NUMBER	INSERT HOLDER	BORING RANGE D		INSERT GEOMETRY	INSERT SCREW	L	L1	A	B
			→	←						
C3	10.470.311	10.626.131	1.260-1.654		TC..11	10.694.122	2.165	.984	1.260	1.969
		10.626.132	1.614-2.008	1.811-2.008						
		10.626.133	1.969-2.362	1.969-2.362						
C4	10.470.411	10.626.141	1.614-2.126							
		10.626.142	1.969-2.480	2.087-2.480						
		10.626.143	2.402-2.913	2.402-2.913						
C5	10.470.511	10.626.151	2.087-2.756	2.441-2.756						
		10.626.152	2.559-3.228	2.717-3.228						
		10.626.153	3.071-3.740	3.071-3.740						
C6	10.470.611	10.626.161	2.677-3.937	3.150-3.937						
		10.626.162	3.700-4.961	3.700-4.961						
		10.626.163	4.646-5.906	4.646-5.906						
C6	10.470.612	10.626.161	3.937-6.024	4.409-6.024						
		10.626.162	4.961-7.047	4.961-7.047						
		10.626.163	5.906-8.000	5.906-8.000						

KAB SHANKS

For rough and finish boring.



CAPTO	CATALOG NUMBER	ADAPTER SIZE	ØD	L	L1	A
C5	C5-CKB3-55	KAB3	1.220	3.740	2.165	2.75
	-CKB4-48	KAB4	1.535	3.740	1.870	2.75
	-CKB5-50	KAB5	1.969	4.212	1.968	3.15
	-CKB6-50	KAB6	2.480	4.763	1.968	3.93
C6	C6-CKB3-65	KAB3	1.220	4.134	2.559	3.15
	-CKB4-58	KAB4	1.535		2.283	
	-CKB5-48	KAB5	1.969		1.890	
	-CKB6-59	KAB6	2.480		2.323	
C8	C8-CKB6-74	KAB6	2.480	6.063	2.913	5.11
	-CKB7-73	KAB7	3.543	6.299	2.874	—
	10.328.086	FK135	5.315	6.417	1.811	—

*Both L and A dimensions in the above table apply when a KAISER boring head is mounted.

For more information on Capto tooling produced by BIG Daishowa, see BIG Coromant Capto Catalog EXi183-1